

ARKIMEDE 10 - DECKING



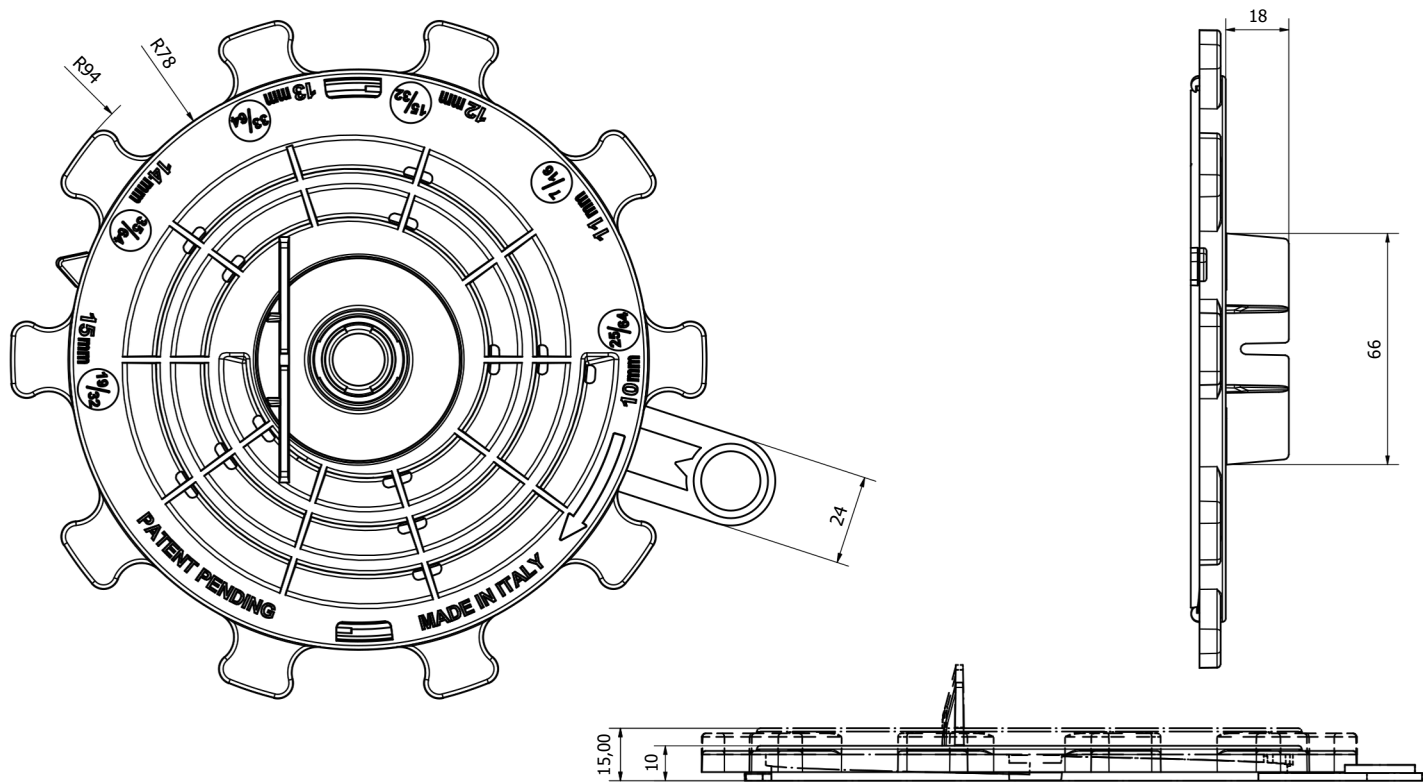
INDEX

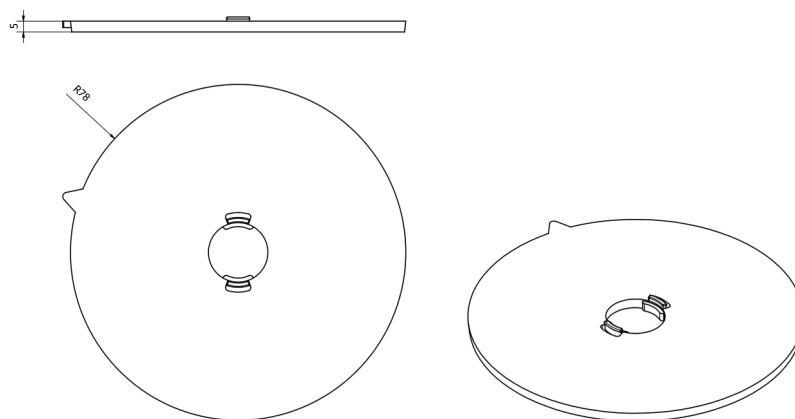
- 1. Code registry
- 2. Description
- 3. Use
- 4. Fields of use
- 5. Load test
- 6. Technical specification

1. CODE REGISTRY

| Code | Description | Dimension (mm) | Weight (kg) | Pkg / Pallet |
|---------------|-----------------------|----------------|-------------|--------------------|
| TER09-1147/1A | ARKIMEDE 10 - Decking | from 10 to 20 | 0,17 | 30 pcs. / 810 pcs. |

MATERIAL Made of PP (polypropylene).





2. DESCRIPTION

Arkimede10telescopic support with adjustable height from a minimum 10 mm to a maximum of 20 mm. The head and the base have a diameter of 156 mm, with a support surface of 191 cm2. Available versions: .

- Package composed of support for decking and **complete with 5 mm extension**

The base allows the correct water outflow.

3. USE

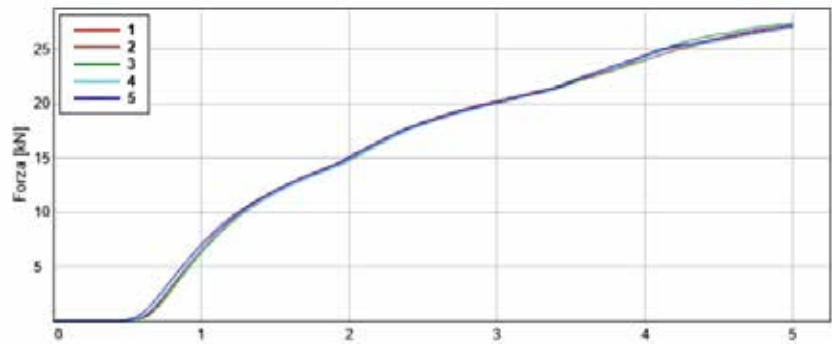
Used in external areas, terraces, pavements.

4. FIELDS OF USE

Waterproof membrane, hard insulating panels, screeds and solid and compact pose plans

5. LOAD TEST

Maximum average load value 11.9 kn



6. TECHNICAL SPECIFICATION

| Voce | Descrizione | Unità | Prezzo |
|----------------------------|---|-------|--------|
| Dak.O.TER09.1147/x | Supply and installation of telescopic support adjustable in height, equipped with 5 mm extension Dimensions: head and base ø 156 mm, support surface 191 cm2. Available in black color. Made of PP (polypropylene) Used in external areas, terraces, shared flooring. | pcs | - |
| Dak.O.TER09.1147/1A | 1 tab..... | pcs | - |